

All-in-one solution to improve ICU experiences and clinical efficiency



Integration Solution for Medical Devices in Critical Care

The demanding environments of an ICU require solutions that are reliable, secure, and most importantly, can handle multiple complex applications. HP and DocBox bring a one-of-its-kind software solution that powers the daily needs of ICU clinicians while enabling healthcare organizations to streamline operations, helping improve patient experiences, increase clinician interaction with the patient, and capture lost revenue.

This solution for ICU medical devices enables automated transfer of medical device data, real-time nurse documentation and patient real-time vitals on one screen at the bedside, giving clinicians more time to focus on direct patient care.

The ability to automate nursing documentation of vitals helps hospitals to utilize their current infrastructure, reduce documentation errors, and accurately track billable clinical interventions.



Growing Challenges in Intensive Care

- Shortage of medical personnel
- Overwhelming numbers of patients and condition complexity
- Medical device information is isolated from the hospital system
- Complex and inefficient workflows
- Decision-making about the patient's health based on disparate information

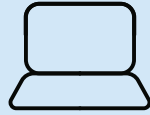


Benefit from the Next-Generation Solution

DocBox software solution offers seamless data integration and automation to help with:



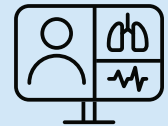
Clinical
Efficiency



Infrastructure
Compatibility



Revenue
Recovery



Tele ICU





Clinical Efficiency

Empower your organization with cutting-edge technology that helps reduce manual data entry errors, simplifies operations, and makes your ICU more efficient.

- Automatically gathers real-time data from medical devices and hospital information system, enabling visualizing patient condition on one screen at the ICU bedside
- Automates nursing documentation, which can lead to a reduction in nursing documentation time and mouse click fatigue
- Enables clinicians to capture procedures and observations at the bedside and monitor the patient from outside of the ICU
- Tele ICU solution for remote ICU patient data and video conferencing





Infrastructure Compatibility

This innovation effortlessly integrates data with EHR systems and helps you elevate the standards of critical care.

- Seamless data integration with EHR systems
- Secure platform with open standards for scaling solutions, including a cybersecurity framework
- Automatically captures the collected data, which is stored using standards-based controlled vocabularies—facilitating easy use of data from different sources
- Includes extensive library of medical device drivers
- Hospital owns the data to use for analytics and application development (~2 GB per patient/per day)





Revenue Recovery

A smart investment that helps you streamline your operations and drive business growth.

- Helps reduce revenue leakage by automatically capturing billable clinical interventions at the patient's bedside
- Hospitals can recover USD 1 million over five years by automating and capturing manually documented activities¹
- Device-as-a-Service (DaaS) model subscription to help improve your cash flow



Photo by Tarek Soluhuddin on Fotw.com



TeleICU

The ability for clinicians to provide clinical care from anywhere to the bedside has transitioned from a convenience to a necessity due to the global shortage of clinicians. Clinicians can now monitor patients by remote presence. Central hospitals can now provide Intensivists' services to rural communities remotely as patients can remain in their community hospital. Connect to the bedside platform remotely and view live data from the bedside using HP Engage One Pro.

- Bi-directional audio and video calling between the bedside DocBox Clinician Assistant and a remote PC, including pan-tilt-zoom camera controls from the remote PC to the bedside camera
- Remote access to any DocBox Clinician Assistant across the hospital intranet
- Remotely view all data currently available at the bedside, including patient demographics, plan of care, and progress notes
- Image viewer app displaying all PACS images
- Ability to document remotely, including the completion of clinical charting scores and assessments, plan of care, progress notes, and any required manual entry
- Laboratory results
- Physiological trends
- Real-time device data (no waveforms)



Clinician Assistant in Critical Care

The Smart Solution

Get the best of everything with HP's general purpose hardware that provides the stability, safety, and security you need. Meticulously designed to deliver exceptional performance, this long-lifecycle product comes with a disinfectable² touchscreen and is EMC compliant³. It is available in different sizes to help you deploy it the way you want and support your unique needs. DocBox software runs on general purpose hardware and is exclusively available pre-installed on the HP Engage One Pro general purpose platform.



1. Calculation based on USA Medicare reimbursement rates from the DocBox case study Recovering Uncaptured ICU Procedure Costs, 2020.
2. Tested up to 10,000 wipes with select germicidal towelettes over a 3-year period. See wipe manufacturer's instructions for disinfecting and the HP cleaning guide for HP tested wipe solutions at How to Sanitize Your HP Device Whitepaper.
<https://h20195.www2.hp.com/v2/GetDocument.aspx?docname=4AA7-7610ENW>
3. HP Engage Go: EMC Compliant- Certified for IEC60601-1-2, CISPR 32 (EN55032) and CISPR 35 (EN55035). HP Engage One: EN 60601-1-2:2015 Edition 4. HP Engage Flex Pro: EN 60601-1-2:2015 Edition 4. HP Engage One Pro: EN 60601-1-2:2015 Edition 4.

By using or accessing the brochure, you agree with the Disclaimer without any qualification or limitation. DocBox Inc. reserves the right to terminate, revoke, modify, alter, add and delete any one or more of the terms and conditions outlined in the brochure. DocBox Inc. shall be under no obligation to notify the user of the amendment to the terms and conditions and the user shall be bound by such amended terms and conditions. Computer-generated images, walkthroughs, and render images used on this brochure are the artist's impression and are indicative of the actual designs. The imagery used on the brochure may not represent actuals or may be indicative of style only. The information on this brochure is presented as general information and no representation or warranty is expressly or impliedly given as to its accuracy, completeness, or correctness. Therefore, DocBox Inc. makes no warranties or representations regarding the use of the content, details, specifications, or information contained in this brochure in terms of their correctness, accuracy, adequacy, usefulness, timeliness, reliability, or otherwise, in each case to the fullest extent permitted by law. Reproduction or distribution of the information without the written permission of the company is prohibited. Copyright © DocBox Inc. 2022.

All rights reserved.

© Copyright 2022 HP Development Company, L.P. The only warranties for HP products are set forth in the express limited warranty statements accompanying such products. Nothing herein should be construed as constituting an additional warranty. HP shall not be liable for technical or editorial errors or omissions contained herein. DocBox, Clinician Assistant in Critical Care and the DocBox logo, are trademarks or registered trademarks of DocBox, Inc. in the U.S. and other countries.